



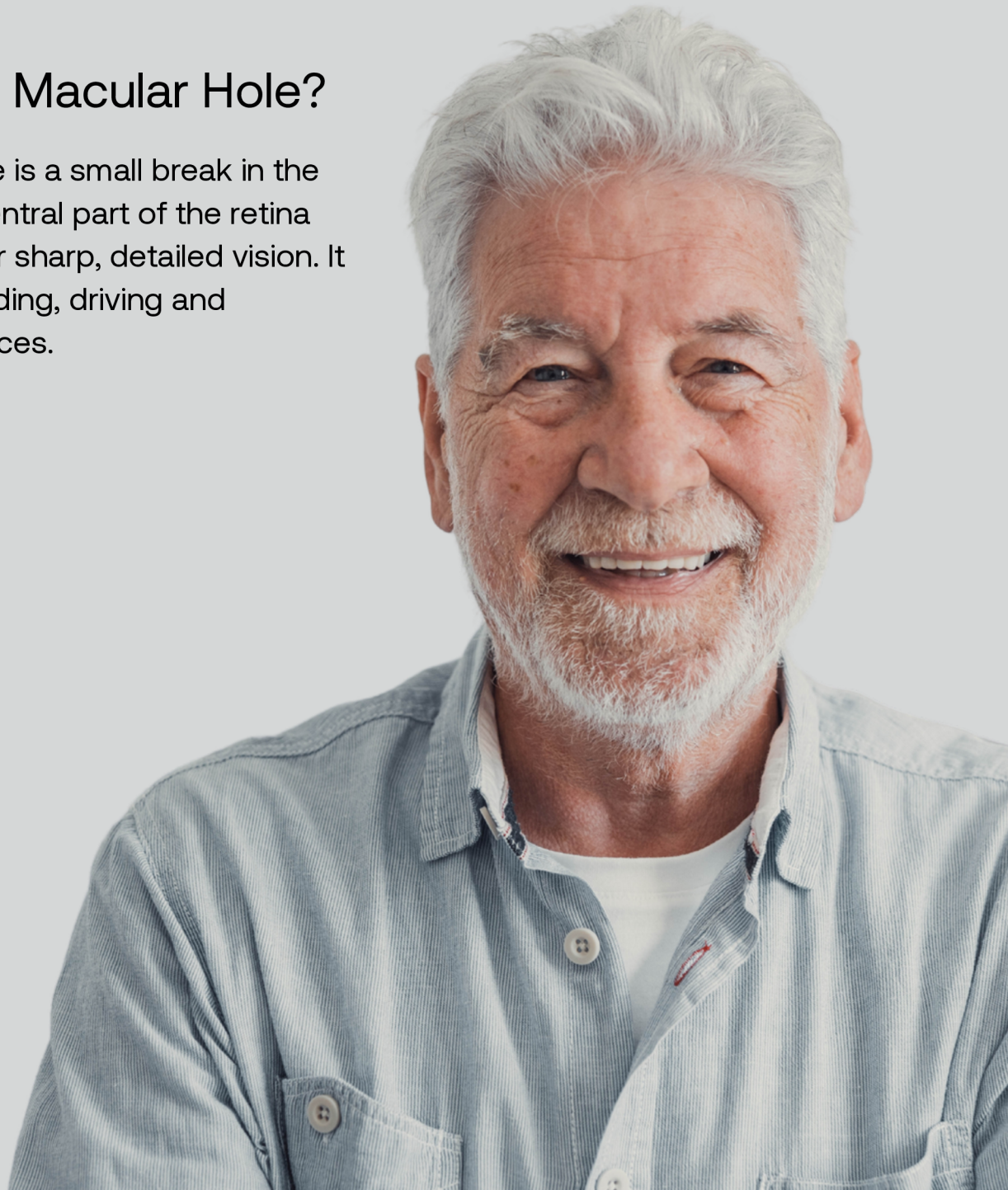
L A S E R V I S I O N

MACULAR HOLE

PATIENT INFORMATION

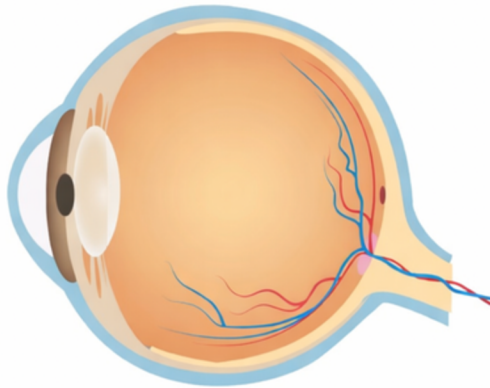
What is a Macular Hole?

A macular hole is a small break in the macula, the central part of the retina responsible for sharp, detailed vision. It can affect reading, driving and recognising faces.

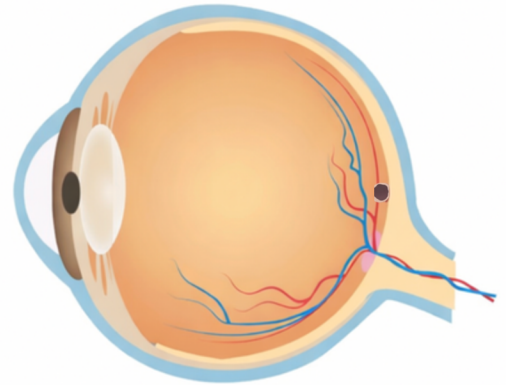


MACULAR HOLE

Normal



Macular Hole



COMMON SYMPTOMS

- Blurred or distorted central vision
- Straight lines appearing wavy or bent
- A dark or missing patch in central vision
- Difficulty reading small print

CAUSES & RISK FACTORS

Macular holes most commonly develop as part of the natural ageing process when the vitreous (the gel inside the eye) pulls away from the retina. Less commonly, they may occur following trauma, high myopia or previous eye surgery.

TREATMENT OPTIONS

Treatment depends on the stage of the macular hole. Early or very small holes may be monitored. Most full-thickness macular holes require vitrectomy surgery, during which the vitreous gel is removed and replaced with a gas bubble to allow the hole to close. Patients may be advised to posture face-down for a period following surgery to aid healing.

WHEN TO SEEK FURTHER ADVICE

Seek urgent assessment if you notice sudden distortion of central vision, a new dark patch in your vision, or rapid worsening of visual clarity. Early diagnosis improves surgical success rates.