



L A S E R V I S I O N

RETINAL DETACHMENT

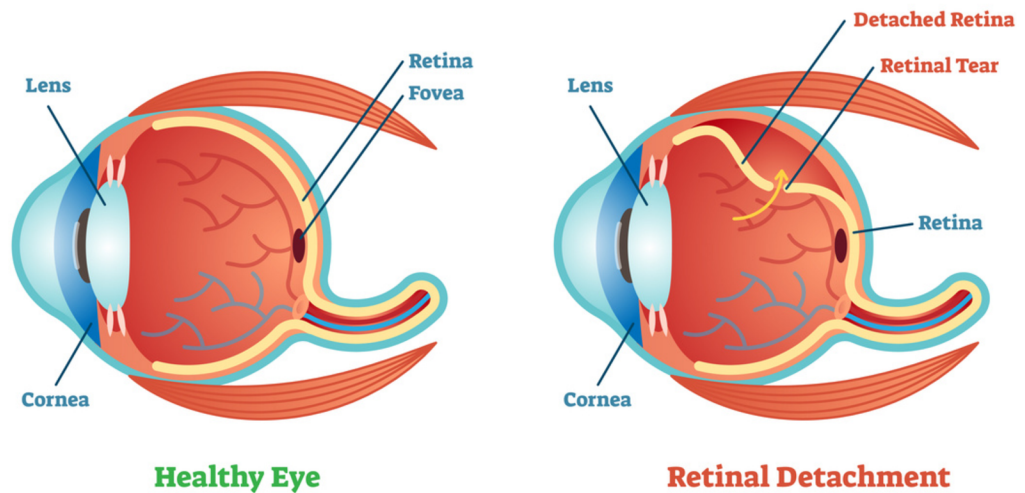
PATIENT INFORMATION

What is Retinal Detachment?

Retinal detachment occurs when the retina separates from the back of the eye. This is a medical emergency.



RETINAL DETACHMENT



COMMON SYMPTOMS

- Sudden floaters
- Flashes of light
- Curtain or shadow over vision

CAUSES

- Rhegmatogenous (most common) – a break in the retinal tissue allows vitreous fluid to seep underneath the retina and detach it. Retinal tears and holes are far more common in high myopia (short-sighted prescriptions) as the retina is thinner and stretched. A posterior vitreous detachment (or PVD) in later life can also trigger a tear or hole;
- Tractional – scar tissue or the vitreous body is tugging on the retina. Proliferative diabetic disease, trauma and surgery can all lead to scar tissue on the surface of the retina which can pull on the tissue to cause a defect;
- Exudative – the formation of subretinal fluid due to inflammatory and/or exudative diseases including Sarcoidosis and metastatic cancers.

TREATMENT OPTIONS

There are a number of surgeries designed to seal holes and reattach the retina, your Laser Vision surgeon will recommend the best retinal detachment surgery for your case after a full consultation, including: Vitrectomy, Scleral Buckle or Pneumatic Retinopathy. In some cases a combination of Vitrectomy and Scleral Buckle are used.

WHEN TO SEEK FURTHER ADVICE

Immediately if you experience flashes, sudden onset of floaters or a shadow across your vision.

FOR FURTHER INFORMATION OR TO BOOK A CONSULTATION,
PLEASE CONTACT LASER VISION ON 02392 292 315