



L A S E R V I S I O N

AMD

AGE RELATED MACULAR DEGENERATION

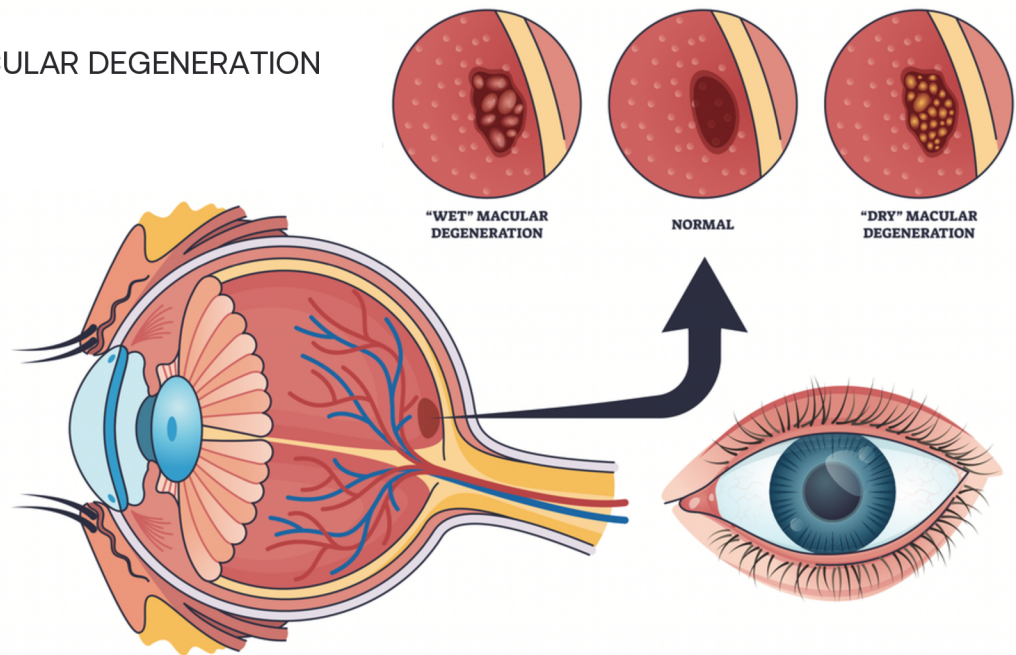
PATIENT INFORMATION

What is AMD?

AMD affects the macula, the central part of the retina responsible for sharp vision. It can make reading, driving and recognising faces difficult.



MACULAR DEGENERATION



TYPES OF AMD

- Dry AMD – gradual progression and most common form.
- Wet AMD – caused by abnormal blood vessel growth and requires urgent treatment.

SYMPTOMS

Blurred or distorted central vision, difficulty reading, dark patches in central vision, and straight lines appearing wavy.

TREATMENT OPTIONS

Dry AMD can now be treated with Valeda® Light Delivery System therapy. Valeda uses multi-wavelength photobiomodulation to stimulate retinal cells and has been shown to improve visual function in selected patients with dry AMD. Treatment is painless, non-invasive and delivered in a series of short sessions.

Wet AMD is typically treated with anti-VEGF injections to control abnormal blood vessel growth.

FOR FURTHER INFORMATION OR TO BOOK A CONSULTATION,
PLEASE CONTACT LASER VISION ON 02392 292 315